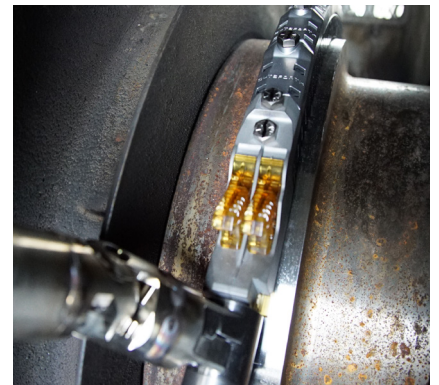


- Cutsforth™ newest series of Shaft Grounding hardware allows for installations on most turbine generators, providing a best-in-class grounding continuity.

SHAFT GROUNDING ASSEMBLY: SERIES 3

Shaft voltage, left unchecked, damages the bearing surfaces of turbine generators, leading to catastrophic failures. Cutsforth™ solves the problem with its newly redesigned innovative **Shaft Grounding Assembly: Series 3** solution that can fit nearly all generators. Cutsforth™ offers three tiers of Voltage & Current Monitoring solutions with a range of feature sets including 4-20 mA DCS output signals, remote test points for safe, hand-held measurements, integrated oscilloscope and waveform recording and more.

Visit Cutsforth.com/ShaftGrounding to review all of the system options.



⚡ GROUNDING ASSEMBLY HIGHLIGHTS

- Safely & easily check shaft voltages & more, away from the shaft
- Best-in-class ground continuity
- Safely change patented grounding ropes online or offline as needed
- Cutsforth™ Universal Mounting System allows for installation on most generators
- Ideal for challenging operating environments
- Pairs with any of Cutsforth™ Voltage & Current Monitoring Solutions.



The shaft grounding systems are working very well right now. Thanks for the smooth installation and the support. Cutsforth™ is excellent and you have a very good reputation here.

— J.W., Senior Engineer,
SE Power Plant

TECHNICAL SPECIFICATIONS

Shaft Grounding Assembly: Series 3



- Dual Rope design allows for superior continuous ground and ground sensing.
- Automatically switches to “Service” mode when one rope is removed to continuously ground.
- The copper rope is a patented design that increases expected service life and reduces the risk of uncontrolled fraying, leading to binding and a loss of ground common to other designs in the marketplace.
- The life expectancy of the copper ropes is approximately 12 months depending on operating environment and could be longer under optimal operating conditions.
- The proprietary rope guide design reduces risks of contamination from the environment, binding, and helps ensure constant rope-to-shaft contact.
- Thermal rating of the grounding assembly is 300 ° F (150 ° C)
- Requires at least 1.375 in (3.5 cm) of running width on the shaft.
- Minimum shaft diameter is 5 in (13 cm).
- Universal mount accommodates a wide variety of access and installation requirements, especially where space is limited. No welding needed.
- Grounding assembly passes Megger test at 1000V
- Incorporates PCB in the Shaft Grounding Assembly frame with circuitry for voltage and current sensing
- Compatible with Cutsforth™ Ground Monitoring Premium, Assurance, and Remote Meter Point

REMOTE METER POINT SYSTEM

Cutsforth™ offers three tiers of Shaft Voltage and Current Monitoring options. Our entry level installation is compatible with Shaft Ground Assembly: Series 2, and includes convenient remote meter test points to meet OEM preventative maintenance requirements.

- » Plant personnel can measure real-time voltage and current levels using a basic handheld volt meter.
- » This meter point can be located at a safe distance from grounding assembly up to 15 ft (5 m) away.
- » Rope wear indicator eliminates necessity of visual inspections of ground rope near the rotating shaft.
- Operating Temperature Range: +5 to 150 F (-15 to 70 C)
 - » **Note:** This is specifically the RMP Enclosure. The Shaft Grounding Assembly hardware max temp rating is higher. Inquire for more information.



Learn about all of Cutsforth™ Shaft Current and Voltage Monitoring options at Cutsforth.com/ShaftGrounding