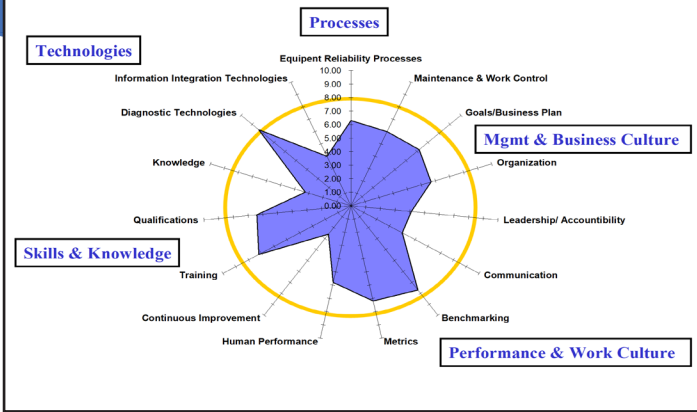


THE POWER OF INNOVATION



Cutsforth™ provides consulting services to assist organizations in Equipment Reliability Monitoring & Diagnostics.

Equipment Reliability Assessment “Spider Chart”



EQUIPMENT RELIABILITY (ER) WORKSHOP

Cutsforth™ consulting services assist organizations with improving Equipment Reliability Processes, ER Management Practices, Work Culture, and ER process Digital Transformation resulting in:

- Accurate Equipment Criticality Determination
- High Compliance to an Engineered PM Basis
- Effective use of the ER Automation Tools
- High % of Condition-Based Maintenance Tasks
- Minimizing Time based PM Tasks
- And more!

Optimization and implementation of ER programs show two key factors in creating a successful strategy:

- Develops sustainable strategy & implementation/Change Management Plan
- Receives necessary cross-functional support

The ER Workshop results in a self-assessment and issue harvesting used to identify improvement opportunities. Workshop Deliverables include:

- “Spider Chart” Self - Appraisal
- ER Excellence Matrix
- Key ER Program Issues/Barriers
- ER Process Value Survey
- Developing Solutions & Next Steps
- Key Observations
- Recommendations

Equipment Reliability Excellence Matrix							
Processes	ER Processes	1 Scoping/Criticality	2 Reliability Analysis & PM Basis	3 PM Implementation	4 System/Component Health Monitoring	5 Reliability Analysis & Corrective Action	6 Long Term Asset Planning/Mgmt.
	Work Control	7 On-Line/Outage Work Control Procedures	8 Work Prioritization & Risk Assessment	9 Stores & Inventory Management	10 Planning	11 Scheduling	12 Contract Management
	Work Execution	13 Work Execution Procedures	14 Equipment Change & Tagging	15 Tool/Material Control/Storage	16 Pre-Job Briefs	17 Public Maintenance & Work Safety	18 Safety
	Engineering & Operations	19 Design Engineering	20 Configuration Management	21 Cycle Chemistry	22 Operating Parameters		
Management & Business Culture	Goals/Business Plan	23 Business Planning & Plant Health	24 Business Goals				
	Organization	25 Roles & Responsibilities	26 Organizational Design	27 Core Competencies	28 Contracted Support	29 Facilities	
	Leadership/ Accountability	30 Vision	31 Discipline/ Accountability	32 Process/Program Ownership/Health	33 System Ownership/ System Health	34 Component Ownership/Health	35 Empowerment & Motivation
	Communication	36 Operations, Maintenance, Eng.	37 Management to Workforce	38 Workforce to Management	39 Peer Groups		
Performance & Work Culture	Benchmarking	40 Within Industry	41 Outside Industry				
	Metrics	42 Departmental Goals	43 Plant Goals - ER Index	44 Personal Goals	45 Customer Satisfaction		
	Human Performance	46 ER MCI and Annual Reliability	47 Error Prevention Program				
	Continuous Improvement	48 Self-Assessment	49 Change Management	50 Process Improvement	51 Research & Development	52 Use of Industry OC	
Skills & Knowledge	Training	53 Processes & Policies	54 Personnel Skills Development	55 System & Equipment Training	56 Management & Supervisor Development	57 ER & Maintenance QA	58 Training Facilities
	Qualifications	59 Personnel Selection	60 Qualification Process	61 Succession Planning			
	Knowledge	62 Knowledge Capture	63 Knowledge Management				
Technologies	Work Mgmt & Diagnostics	64 CMMS	65 CAP	66 Cost Monitoring Technologies	67 Purified & Diagnostics		
	Information Integration	68 Scoping/Criticality	69 System & Component Health	70 PM Implementation	71 Reliability Analysis & PM Basis	72 Predictive Maintenance	73 Long Term Planning & Asset Mgmt.

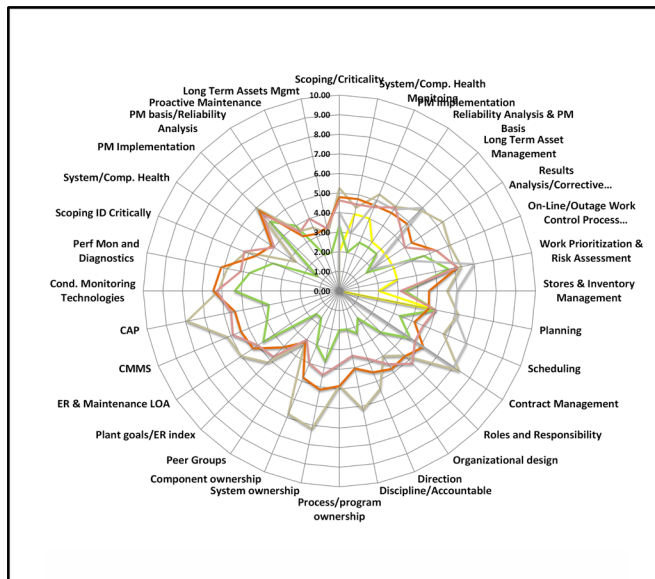
Sample Equipment Reliability Excellence Matrix



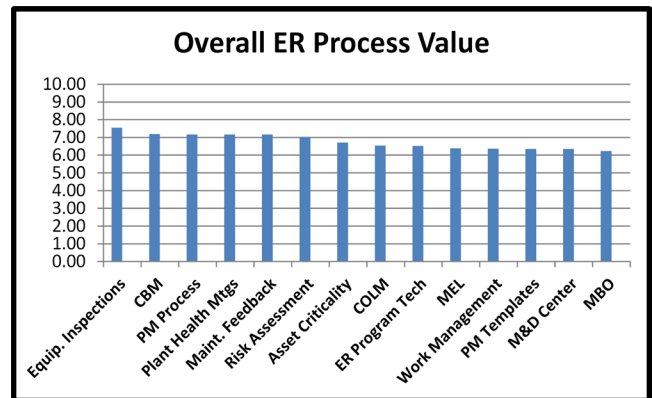
Improving Equipment Reliability

Approximately 20 to 50 key individuals from your organization will attend the workshop. The entire management team will participate alongside various representatives from Engineering, Maintenance, Work Management and Operations. The workshop takes place over the course of 1 1/2 days, and is a high - energy event that will cover:

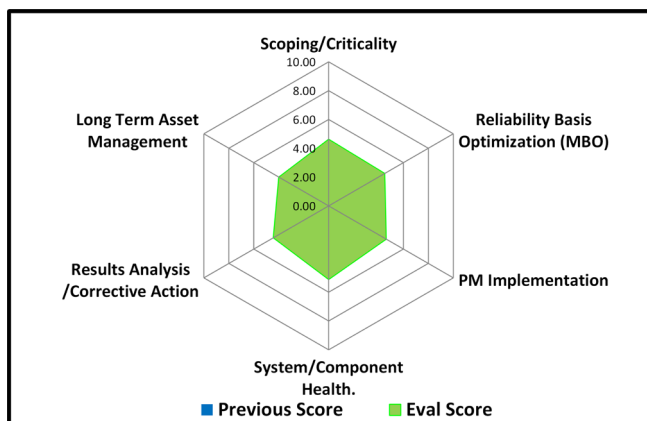
- Overall description of ER best practices
- Overview of Equipment Reliability as a business issue
- Roles and Responsibilities based on best practices
- Technology to support "Digital Transformation" of the ER processes
- Maintenance & Work Control Processes



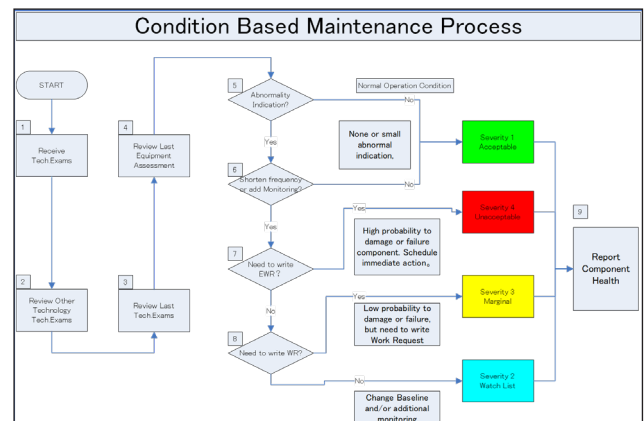
Organizational Consistency Spider Chart



ER Process Value Survey



ER Process Spider Chart



Condition Based Maintenance Flow Chart

The ER Workshop is the first step in achieving excellence in Equipment Reliability!